

## SECTION 22

### FAN FILTER ASSEMBLIES

#### TABLE OF CONTENTS

Section	Page
22.1 Technical Description .....	22-1
22.2 Servicing and Alignment .....	22-1
22.3 Component Layout and Schematics .....	22-2
22.4 Parts List .....	22-2

#### LIST OF ILLUSTRATIONS

Figure	Page
22-1 Front Slide-out Rack Fan Removal .....	22-1
22-2 Rear Panel Card Rack Fan Removal .....	22-1
22-3 Fan Filter Component Layout .....	22-2
22-4 Fan Filter Schematic .....	22-2

#### LIST OF TABLES

No tables are included in this section.

## 22.1 TECHNICAL DESCRIPTION

### 22.1.1 General Description

The projector fans keep the projector electronics cool during operation. A passive filter to prevent electrical noise from entering the video and control circuitry is mounted to the upper corner of each fan.

## 22.2 SERVICING AND ALIGNMENT

### 22.2.1 Disassembly and Access

#### 22.2.1.1 Front Slide-out Rack Fan

##### Module Location:

- front slide-out rack

##### Tools & Equipment Required:

- 1/4" hex head socket driver

- Remove the projector lower front and side panels as described in Section 5.2.
- Carefully slide the front slide-out rack out about 4".
- Locate the fan and filter printed circuit board. Disconnect connector P1 from the circuit board.
- Remove the two screws securing the fan to the front slide-out rack.
- Remove the Fan and Fan Filter Assembly from the front rack.

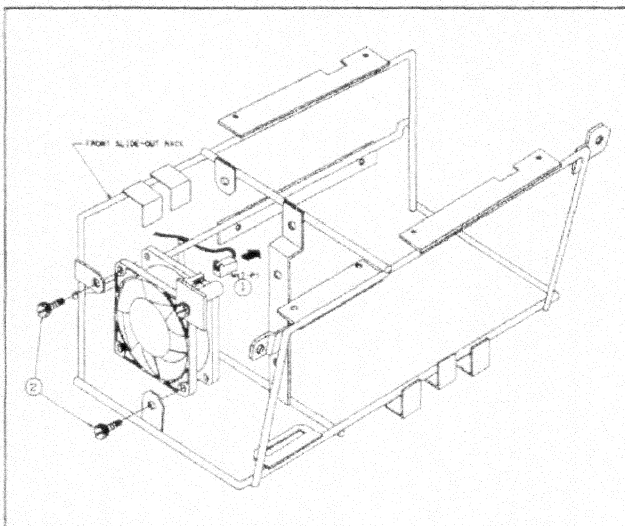


FIGURE 22-1. Front Slide-out Rack Fan Removal

#### 22.2.1.1 Rear Panel Card Rack Fan

##### Module Location:

- rear panel card rack

##### Tools & Equipment Required:

- 1/4" hex head socket driver

- Remove the left side panel next to the Remote Jack Assembly as described in Section 5.2.
- Locate the fan and filter printed circuit board. Disconnect connector P1 from the circuit board.
- Remove the two screws securing the fan to the rear frame as shown.
- Remove the Fan and Fan Filter Assembly from the rear frame.

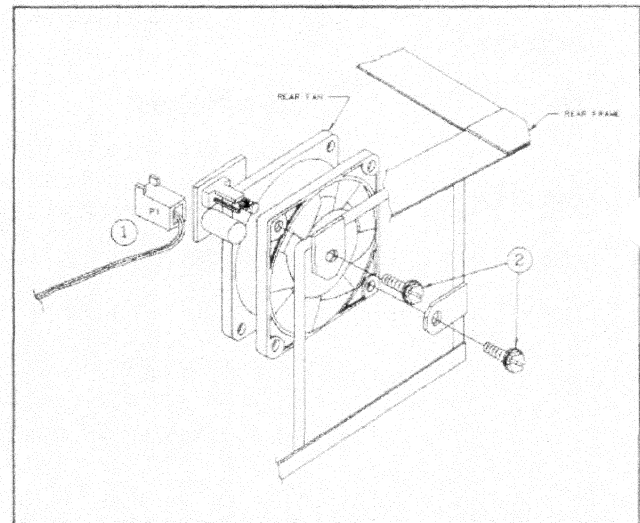


FIGURE 22-2. Rear Panel Card Rack Fan Removal

### 22.2.2 Alignment and Adjustments

The Fan Filter does not require alignment.

## 22-2 MODULE SERVICING Fan Filter Assembly

### 22.3 COMPONENT LAYOUT AND SCHEMATICS

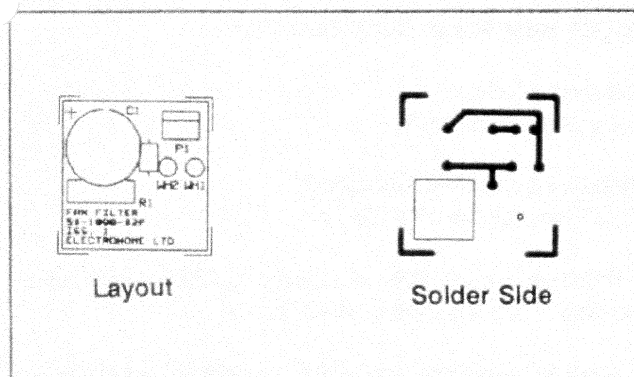


FIGURE 22-3. Fan Filter Component Layout

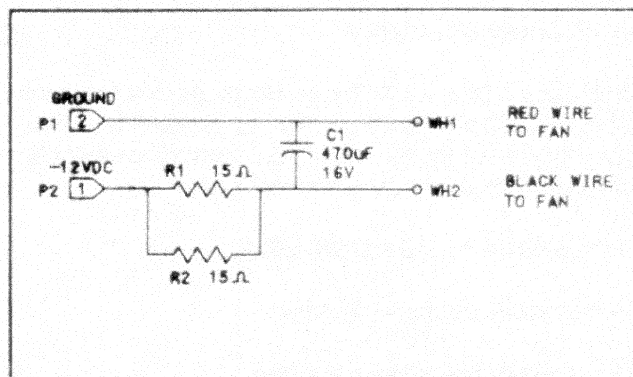


FIGURE 22-4. Fan Filter Schematic

### 21.4 PARTS LIST

Item Ref.	Part No.	Description
<b>Capacitors</b>		
C1	44-447103-06P	470 $\mu$ F, 16V
<b>Resistors</b>		
R1,R2	80-115095-11P	15R, 1/2W, 5%, metal film